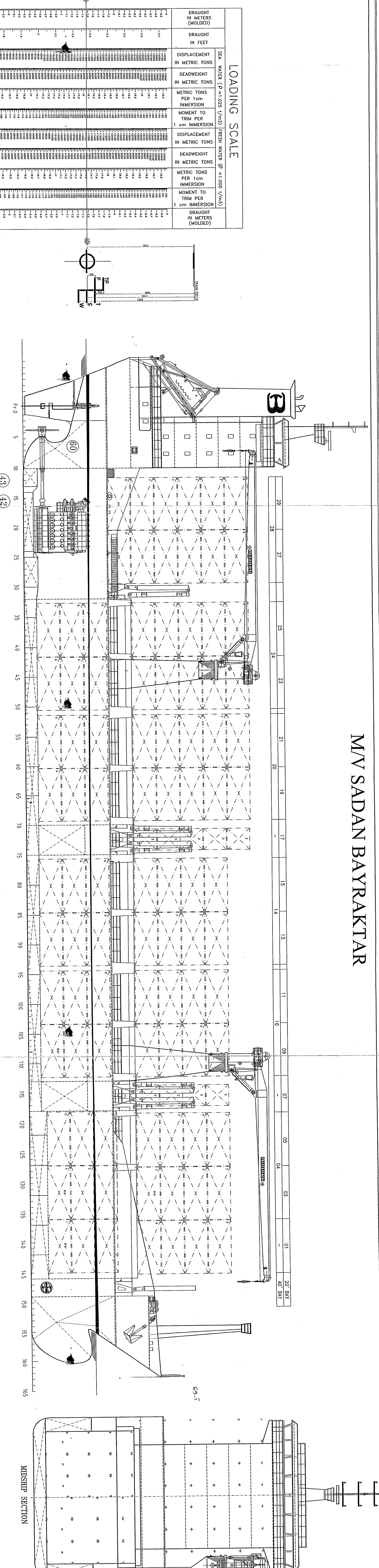
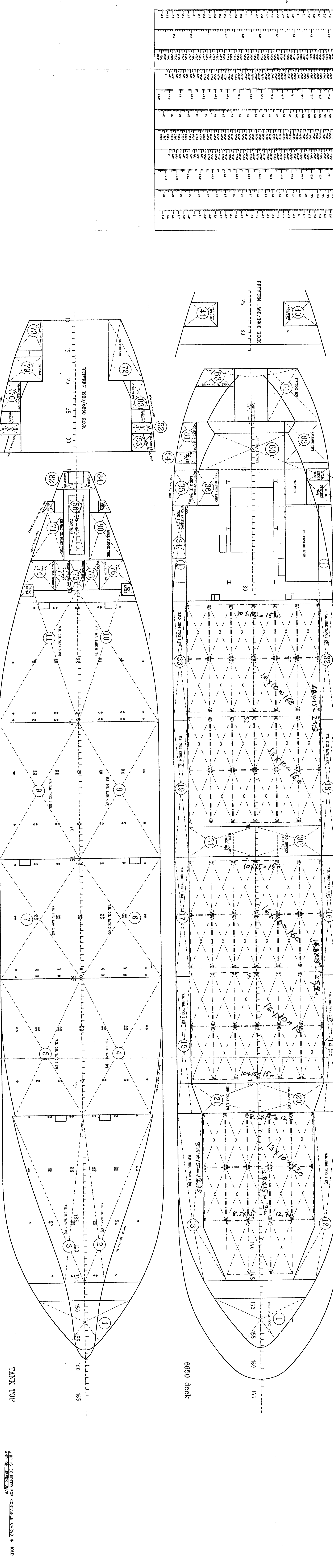


# M/V SADAN BAYRAKTAR



LOADING SCALE	
SEA WATER (ρ = 1.025 t/m <sup>3</sup> )	FRESH WATER (ρ = 1.000 t/m <sup>3</sup> )
DISPLACEMENT IN METRIC TONS	DISPLACEMENT IN METRIC TONS
DEADWEIGHT IN METRIC TONS	DEADWEIGHT IN METRIC TONS
METRIC TONS PER 1cm IMMERSION	METRIC TONS PER 1cm IMMERSION
MOMENT TO TRIM PER 1 cm IMMERSION	MOMENT TO TRIM PER 1 cm IMMERSION
DISPLACEMENT IN METRIC TONS	DISPLACEMENT IN METRIC TONS
DEADWEIGHT IN METRIC TONS	DEADWEIGHT IN METRIC TONS
METRIC TONS PER 1cm IMMERSION	METRIC TONS PER 1cm IMMERSION
MOMENT TO TRIM PER 1 cm IMMERSION	MOMENT TO TRIM PER 1 cm IMMERSION
DISPLACEMENT IN METRIC TONS	DISPLACEMENT IN METRIC TONS
DEADWEIGHT IN METRIC TONS	DEADWEIGHT IN METRIC TONS
METRIC TONS PER 1cm IMMERSION	METRIC TONS PER 1cm IMMERSION
MOMENT TO TRIM PER 1 cm IMMERSION	MOMENT TO TRIM PER 1 cm IMMERSION
DISPLACEMENT IN METRIC TONS	DISPLACEMENT IN METRIC TONS
DEADWEIGHT IN METRIC TONS	DEADWEIGHT IN METRIC TONS
METRIC TONS PER 1cm IMMERSION	METRIC TONS PER 1cm IMMERSION
MOMENT TO TRIM PER 1 cm IMMERSION	MOMENT TO TRIM PER 1 cm IMMERSION

CAPACITY OF HULLS									
NO.	COMPARTMENTS	FRAME	VOLUME (m <sup>3</sup> )	DENSITY (ton/m <sup>3</sup> )	WEIGHT (ton)	V.C.G. (m)	L.C.G. (m)	T.C.G. (m)	F.S.M. (m)
1	NO. 1	1	1000	1.025	1025	5.00	5.00	5.00	5.00
2	NO. 2	2	2000	1.025	2050	5.00	5.00	5.00	5.00
3	NO. 3	3	3000	1.025	3075	5.00	5.00	5.00	5.00
4	NO. 4	4	4000	1.025	4100	5.00	5.00	5.00	5.00
5	NO. 5	5	5000	1.025	5125	5.00	5.00	5.00	5.00
6	NO. 6	6	6000	1.025	6150	5.00	5.00	5.00	5.00
7	NO. 7	7	7000	1.025	7175	5.00	5.00	5.00	5.00
8	NO. 8	8	8000	1.025	8200	5.00	5.00	5.00	5.00
9	NO. 9	9	9000	1.025	9225	5.00	5.00	5.00	5.00
10	NO. 10	10	10000	1.025	10250	5.00	5.00	5.00	5.00
11	NO. 11	11	11000	1.025	11275	5.00	5.00	5.00	5.00
12	NO. 12	12	12000	1.025	12300	5.00	5.00	5.00	5.00
13	NO. 13	13	13000	1.025	13325	5.00	5.00	5.00	5.00
14	NO. 14	14	14000	1.025	14350	5.00	5.00	5.00	5.00
15	NO. 15	15	15000	1.025	15375	5.00	5.00	5.00	5.00
16	NO. 16	16	16000	1.025	16400	5.00	5.00	5.00	5.00
17	NO. 17	17	17000	1.025	17425	5.00	5.00	5.00	5.00
18	NO. 18	18	18000	1.025	18450	5.00	5.00	5.00	5.00
19	NO. 19	19	19000	1.025	19475	5.00	5.00	5.00	5.00
20	NO. 20	20	20000	1.025	20500	5.00	5.00	5.00	5.00
21	NO. 21	21	21000	1.025	21525	5.00	5.00	5.00	5.00
22	NO. 22	22	22000	1.025	22550	5.00	5.00	5.00	5.00
23	NO. 23	23	23000	1.025	23575	5.00	5.00	5.00	5.00
24	NO. 24	24	24000	1.025	24600	5.00	5.00	5.00	5.00
25	NO. 25	25	25000	1.025	25625	5.00	5.00	5.00	5.00
26	NO. 26	26	26000	1.025	26650	5.00	5.00	5.00	5.00
27	NO. 27	27	27000	1.025	27675	5.00	5.00	5.00	5.00
28	NO. 28	28	28000	1.025	28700	5.00	5.00	5.00	5.00
29	NO. 29	29	29000	1.025	29725	5.00	5.00	5.00	5.00
30	NO. 30	30	30000	1.025	30750	5.00	5.00	5.00	5.00
31	NO. 31	31	31000	1.025	31775	5.00	5.00	5.00	5.00
32	NO. 32	32	32000	1.025	32800	5.00	5.00	5.00	5.00
33	NO. 33	33	33000	1.025	33825	5.00	5.00	5.00	5.00
34	NO. 34	34	34000	1.025	34850	5.00	5.00	5.00	5.00
35	NO. 35	35	35000	1.025	35875	5.00	5.00	5.00	5.00
36	NO. 36	36	36000	1.025	36900	5.00	5.00	5.00	5.00
37	NO. 37	37	37000	1.025	37925	5.00	5.00	5.00	5.00
38	NO. 38	38	38000	1.025	38950	5.00	5.00	5.00	5.00
39	NO. 39	39	39000	1.025	40000	5.00	5.00	5.00	5.00
40	NO. 40	40	40000	1.025	41050	5.00	5.00	5.00	5.00
41	NO. 41	41	41000	1.025	42100	5.00	5.00	5.00	5.00
42	NO. 42	42	42000	1.025	43150	5.00	5.00	5.00	5.00
43	NO. 43	43	43000	1.025	44200	5.00	5.00	5.00	5.00
44	NO. 44	44	44000	1.025	45250	5.00	5.00	5.00	5.00
45	NO. 45	45	45000	1.025	46300	5.00	5.00	5.00	5.00
46	NO. 46	46	46000	1.025	47350	5.00	5.00	5.00	5.00
47	NO. 47	47	47000	1.025	48400	5.00	5.00	5.00	5.00
48	NO. 48	48	48000	1.025	49450	5.00	5.00	5.00	5.00
49	NO. 49	49	49000	1.025	50500	5.00	5.00	5.00	5.00
50	NO. 50	50	50000	1.025	51550	5.00	5.00	5.00	5.00
51	NO. 51	51	51000	1.025	52600	5.00	5.00	5.00	5.00
52	NO. 52	52	52000	1.025	53650	5.00	5.00	5.00	5.00
53	NO. 53	53	53000	1.025	54700	5.00	5.00	5.00	5.00
54	NO. 54	54	54000	1.025	55750	5.00	5.00	5.00	5.00
55	NO. 55	55	55000	1.025	56800	5.00	5.00	5.00	5.00
56	NO. 56	56	56000	1.025	57850	5.00	5.00	5.00	5.00
57	NO. 57	57	57000	1.025	58900	5.00	5.00	5.00	5.00
58	NO. 58	58	58000	1.025	59950	5.00	5.00	5.00	5.00
59	NO. 59	59	59000	1.025	61000	5.00	5.00	5.00	5.00
60	NO. 60	60	60000	1.025	62050	5.00	5.00	5.00	5.00
61	NO. 61	61	61000	1.025	63100	5.00	5.00	5.00	5.00
62	NO. 62	62	62000	1.025	64150	5.00	5.00	5.00	5.00
63	NO. 63	63	63000	1.025	65200	5.00	5.00	5.00	5.00
64	NO. 64	64	64000	1.025	66250	5.00	5.00	5.00	5.00
65	NO. 65	65	65000	1.025	67300	5.00	5.00	5.00	5.00
66	NO. 66	66	66000	1.025	68350	5.00	5.00	5.00	5.00
67	NO. 67	67	67000	1.025	69400	5.00	5.00	5.00	5.00
68	NO. 68	68	68000	1.025	70450	5.00	5.00	5.00	5.00
69	NO. 69	69	69000	1.025	71500	5.00	5.00	5.00	5.00
70	NO. 70	70	70000	1.025	72550	5.00	5.00	5.00	5.00
71	NO. 71	71	71000	1.025	73600	5.00	5.00	5.00	5.00
72	NO. 72	72	72000	1.025	74650	5.00	5.00	5.00	5.00
73	NO. 73	73	73000	1.025	75700	5.00	5.00	5.00	5.00
74	NO. 74	74	74000	1.025	76750	5.00	5.00	5.00	5.00
75	NO. 75	75	75000	1.025	77800	5.00	5.00	5.00	5.00
76	NO. 76	76	76000	1.025	78850	5.00	5.00	5.00	5.00
77	NO. 77	77	77000	1.025	79900	5.00	5.00	5.00	5.00
78	NO. 78	78	78000	1.025	80950	5.00	5.00	5.00	5.00
79	NO. 79	79	79000	1.025	82000	5.00	5.00	5.00	5.00
80	NO. 80	80	80000	1.025	83050	5.00	5.00	5.00	5.00
81	NO. 81	81	81000	1.025	84100	5.00	5.00	5.00	5.00
82	NO. 82	82	82000	1.025	85150	5.00	5.00	5.00	5.00
83	NO. 83	83	83000	1.025	86200	5.00	5.00	5.00	5.00
84	NO. 84	84	84000	1.025	87250	5.00	5.00	5.00	5.00
85	NO. 85	85	85000	1.025	88300	5.00	5.00	5.00	5.00
86	NO. 86	86	86000	1.025	89350	5.00	5.00	5.00	5.00
87	NO. 87	87	87000	1.025	90400	5.00	5.00	5.00	5.00
88	NO. 88	88	88000	1.025	91450	5.00	5.00	5.00	5.00
89	NO. 89	89	89000	1.025	92500	5.00	5.00	5.00	5.00
90	NO. 90	90	90000	1.025	93550	5.00	5.00	5.00	5.00
91	NO. 91	91	91000	1.025	94600	5.00	5.00	5.00	5.00
92	NO. 92	92	92000	1.025	95650	5.00	5.00	5.00	5.00
93	NO. 93	93	93000	1.025	96700	5.00	5.00	5.00	5.00
94	NO. 94	94	94000	1.025	97750	5.00	5.00	5.00	5.00
95	NO. 95	95	95000	1.025	98800	5.00	5.00	5.00	5.00
96	NO. 96	96	96000	1.025	99850	5.00	5.00	5.00	5.00
97	NO. 97	97	97000	1.025	100900	5.00	5.00	5.00	5.00
98	NO. 98	98	98000	1.025	101950	5.00	5.00	5.00	5.00
99	NO. 99	99	99000	1.025	103000	5.00	5.00	5.00	5.00
100	NO. 100	100	100000	1.025	104050	5.00	5.00	5.00	5.00



CAPACITY OF M.D.O. TANKS									
NO.	COMPARTMENTS	FRAME	VOLUME (m <sup>3</sup> )	DENSITY (ton/m <sup>3</sup> )	WEIGHT (ton)	V.C.G. (m)	L.C.G. (m)	T.C.G. (m)	F.S.M. (m)
1	NO. 1	1	1000	1.025	1025	5.00	5.00	5.00	5.00
2	NO. 2	2	2000	1.025	2050	5.00	5.00	5.00	5.00
3	NO. 3	3	3000	1.025	3075	5.00	5.00	5.00	5.00