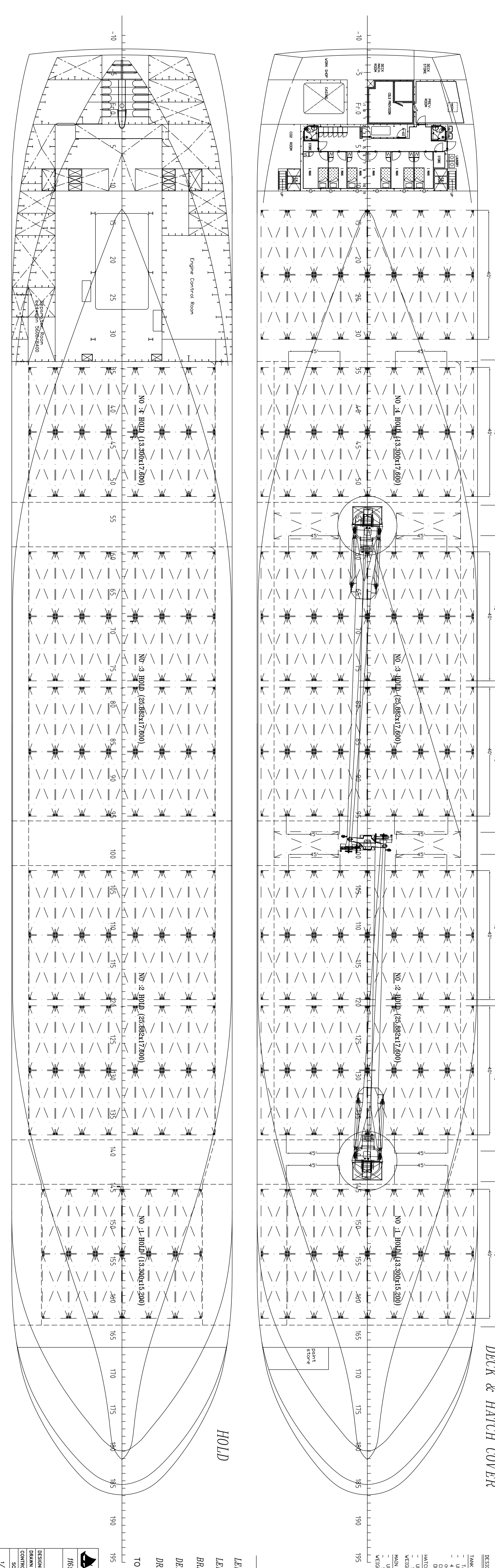
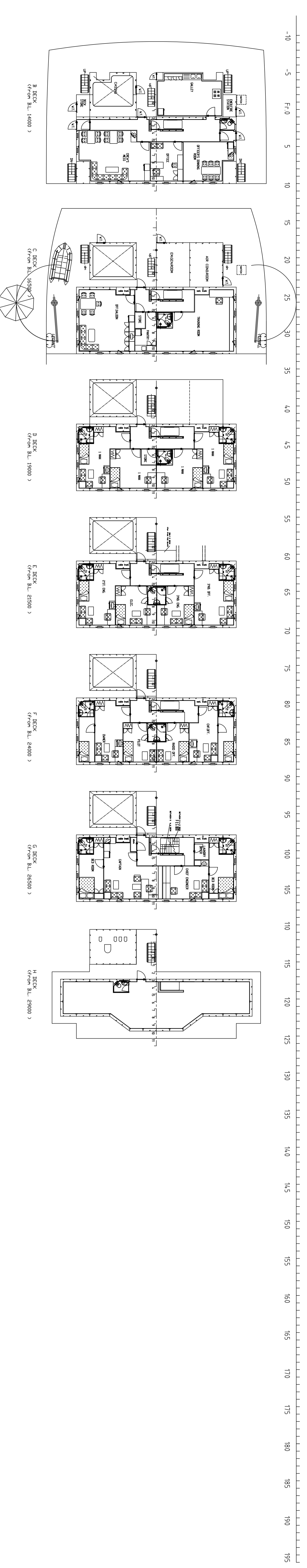
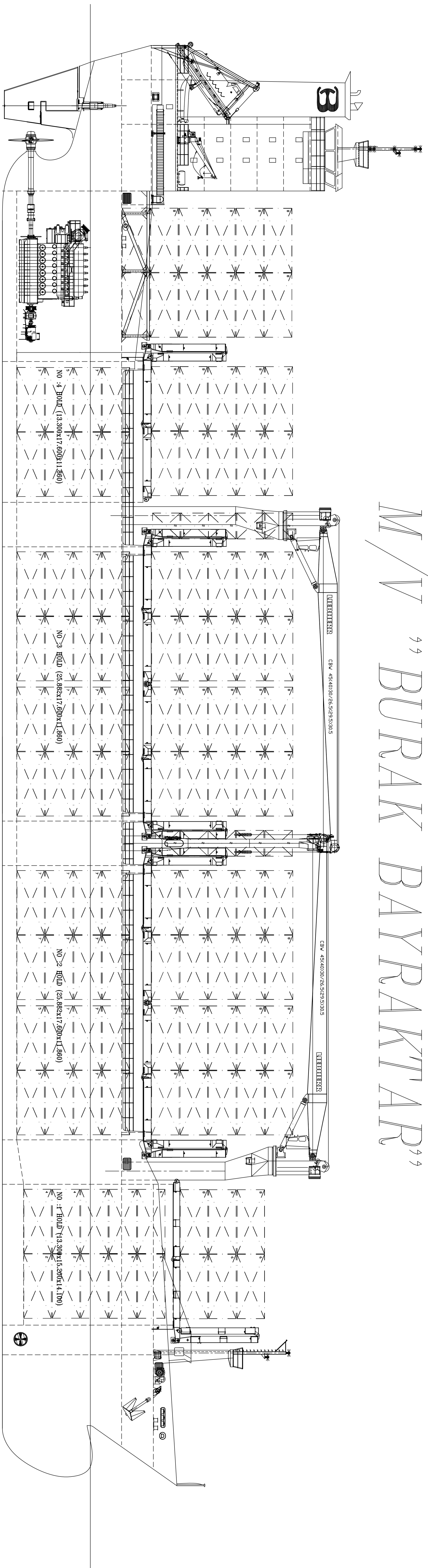


M/V "BURAK BAYRAKTAR"



GENERAL ARRANGEMENT

DESIGNED BY: MAINT. COIN. SHIPYARD K. (120-01-01) DATE: 03/19/2002
 CONTROLLED BY: MAINT. COIN. SHIPYARD K. (120-01-01) FILE: BA0014/2500017
 SCALE: 1/100
 CLASS: A.B.S. RA
 HULL NO.:
 SHIPYARD NO.: BA0014/2500017
 ON-DECK: CHIEF ENGINEER MAINT. COIN. SHIPYARD K. (120-01-01)
11655 D.M.T. MİLLİET FIRMANESİ CUMHURİYETİ (680 TTD)

TO CLASS "A1, E" CONTAINER SHIP

LENGTH OVERALL	=335,990 M.
LENGTH BP	=124,886 M.
BREADTH	=20,800 M.
DEPTH	=11,250 M.
DRAFT (design)	= 8,300 M.

DECK & HATCH COVER

MAIN DIMENSION

LENGTH OVERALL: =335,990 M.
 LENGTH BP: =124,886 M.
 BREADTH: =20,800 M.
 DEPTH: =11,250 M.
 DRAFT (design): = 8,300 M.

REGISTRATION DATA

NAME: BURAK BAYRAKTAR
 TYPE: CONTAINER SHIP
 GRADE: 11655
 GROSS REGISTERED TONNAGE: 11,250
 NET TONNAGE: 8,300
 GROSS TONNAGE: 19,550
 REGISTERED PORT: KILIK
 PORT OF CALL: KILIK, FIRMANES, CUMHURİYETİ
 OWNER: CHIEF ENGINEER MAINT. COIN. SHIPYARD K. (120-01-01)
 OPERATOR: CHIEF ENGINEER MAINT. COIN. SHIPYARD K. (120-01-01)
 MANAGER: CHIEF ENGINEER MAINT. COIN. SHIPYARD K. (120-01-01)
 SUPERVISOR: CHIEF ENGINEER MAINT. COIN. SHIPYARD K. (120-01-01)
 DESIGNER: CHIEF ENGINEER MAINT. COIN. SHIPYARD K. (120-01-01)
 ENGINEER: CHIEF ENGINEER MAINT. COIN. SHIPYARD K. (120-01-01)
 ARCHITECT: CHIEF ENGINEER MAINT. COIN. SHIPYARD K. (120-01-01)
 STRUCTURAL: CHIEF ENGINEER MAINT. COIN. SHIPYARD K. (120-01-01)
 MECHANICAL: CHIEF ENGINEER MAINT. COIN. SHIPYARD K. (120-01-01)
 ELECTRICAL: CHIEF ENGINEER MAINT. COIN. SHIPYARD K. (120-01-01)
 PIPING: CHIEF ENGINEER MAINT. COIN. SHIPYARD K. (120-01-01)
 HULL: CHIEF ENGINEER MAINT. COIN. SHIPYARD K. (120-01-01)
 MACHINERY: CHIEF ENGINEER MAINT. COIN. SHIPYARD K. (120-01-01)
 PPE: CHIEF ENGINEER MAINT. COIN. SHIPYARD K. (120-01-01)
 PAINT: CHIEF ENGINEER MAINT. COIN. SHIPYARD K. (120-01-01)